

OCONEE JOINT REGIONAL SEWER AUTHORITY REQUEST FOR BIDS

PROJECT #2024-04 CCTV Inspection and Cleaning of Gravity Sanitary Sewer Pipeline and Manholes



BID DUE DATE/TIME: August 23, 2023 at 2:00 PM Local Time

Pre-Bid Conferences and Site Visits
MANDATORY - Contractor
must attend only one of the two

Deadline for Inquiries
Bid Submittal Deadline
Services Start Date

August 8 and August 11, 2023, both at 10:00 am Local Time
Oconee Joint Regional Sewer Authority
Coneross Creek Water Reclamation Facility
623 Return Church Road, Seneca, South Carolina
August 17, 2023 at 4:00 pm Local Time
August 23, 2023 at 2:00 pm Local Time
No later September 20, 2023

REQUEST FOR BIDS

Purpose

The Oconee Joint Regional Sewer Authority (“OJRSA” or “Owner”) is requesting bids from qualified sewer conveyance system cleaning and inspection companies, hereafter referred to as “Offerors” or “Contractors,” interested in providing closed-circuit television (CCTV), cleaning, and manhole inspection services to the OJRSA in Seneca, South Carolina.

The OJRSA is seeking a Contractor to perform CCTV inspection and cleaning, with reports, on approximately 16,100 linear feet of 8- to 36-inch sewer gravity pipeline and 152 total manholes.

Definitions and Acronyms

The following definitions shall apply to this technical specification for CCTV Inspection Services:

- A. Business Day: Monday through Friday, except recognized holidays as defined in the *OJRSA Employee Handbook* or when otherwise established by the OJRSA Board of Commissioners.
- B. CCTV: Closed-circuit Television
- C. Contractor: Service provider awarded the work under this contract
- D. DIP: Ductile Iron Pipe
- E. fps: Feet per Second (measure of speed)
- F. LF: Linear feet (unit of distance)
- G. MACP: Manhole Assessment Certification Program
- H. Manhole, Manhole Structure, or Maintenance Access Structure: When used to describe an access way to the sewer system or a starting/finishing location for line inspection, the term “Manhole Structure” should be construed as any access port to the sewer system.
- I. NASSCO: National Association of Sewer Service Companies
- J. Owner: Oconee Joint Regional Sewer Authority (OJRSA)
- K. PACP: Pipeline Assessment Certification Program
- L. psi: Pounds per Square Inch (unit of pressure)
- M. Segment: When used to describe a section of the sewer line, the term “segment” should be construed as that portion of the sewer pipe between two manhole structures.
- N. VCP: Vitrified Clay Pipe

General Work Information

- A. All operations described in these specifications shall be conducted by the Contractor’s personnel and the expense of all such operations shall be the Contractor’s.
- B. The Contractor shall provide all equipment, labor, fuel, and any other materials and incidentals necessary to complete the required work. The Contractor shall be responsible for all maintenance and repair of equipment and the availability presence, and supervision of all employees.
- C. The Contractor shall have a competent and experienced Supervisor/Foreman on duty at all times when work is being performed under Contract.
- D. **There shall be no subcontractors used by the Contractor to fulfill any items or conditions of the contract without prior written consent of OJRSA; however, if approved, they will be expected to comply with the requirements of this RFB. The Contractor awarded the project shall be held accountable for the failure of a subcontractor to comply.**

Scope of Work

General Inspection and Cleaning Information

- A. This RFB references the attached map labeled “Exhibit A.”
- B. All CCTV, cleaning, and inspecting shall be performed in accordance with this Scope of Work and to the satisfaction of OJRSA. The breakdown will be:

1. 4,476± linear feet of 8-inch VCP (average and peak flow unknown),
 2. 1,691± linear feet of 10-inch VCP with average flow of <10 gpm and peak of 260 gpm,
 3. 240± linear feet of 12-inch VCP (average and peak flow unknown),
 4. 6,046± linear feet of 15-inch VCP (average and peak flow unknown),
 5. 742± linear feet of 30 -inch VCP (average and peak flow unknown),
 6. 2,917± linear feet of 36-inch VCP with average flow of 350 gpm and peak of 3,600 gpm, and
 7. 152 manholes for inspection
- C. The inspection and reporting shall utilize a NASSCO PACP/MACP certified software. (see map included as Exhibit A).
- D. If necessary, gravity lines and manholes that have excessive flow prohibiting cleaning or inspection services, shall be cleaned or inspected outside of normal work hours in coordination with the OJRSA at no additional cost. The Contractor shall communicate which lines require this low flow cleaning three (3) business days prior to commencement of night-time work. If bypass pumping is necessary, OJRSA will provide all the equipment and personnel for any bypass pumping operation. Flow thru plugs may also be used if deemed appropriate to do so.
- E. The Contractor shall take satisfactory precautions to protect the sewer segments, easements, and other public and private property from damage that might be inflicted upon them using necessary equipment. Whenever hydraulically propelled cleaning tools, or any tools which hold back the flow of water in the sewer segment are used, precautions shall be taken by the Contractor to ensure that the water pressure utilized does not result in any damage of the sewer line or flooding to public or private property.
- F. Combination sewer cleaners with high velocity jetting and vacuum removal equipment shall be utilized to perform cleaning of sewer lines and manholes throughout the sewer system identified in the Project.
- G. The intent of sewer pipeline/manhole cleaning is to: (1) remove foreign materials from sewer lines to restore the capacity of the lines to their design hydraulic capacity, (2) remove foreign materials from sewer lines to allow for complete pipeline condition assessment according to PACP standards, and (3) remove foreign materials from manholes.
- H. Debris and obstructions to be removed prior to inspection include, but are not limited to, sludge, mud, sand, gravel, rocks, bricks, grease, pieces of broken pipe, roots, rags, encrusted hardened debris, protruding taps, foreign materials, etc. The inspection of the sewer lines and manholes shall not proceed until the cleaning and preparation has been completed to the satisfaction of OJRSA.

CCTV Inspection

- A. The camera used for the inspection shall be one specifically designed and constructed for sanitary sewer gravity conveyance systems. Lighting for the camera shall be suitable to allow a clear picture of the entire periphery of the pipe. The camera shall be operative in 100 percent (100%) humidity and submerged conditions. The camera equipment will provide a view of the pipe ahead, and of features to the side of the camera through turning and rotation of the lens. The camera shall be capable of tilting at right angles along the axis of the pipe while panning the camera lens through a full circle about the circumference of the pipe. The lights on the camera shall also be capable of panning 90-degrees (90°) to the axis of the pipe. Cameras incorporating mirrors for viewing sides or using exposed rotating heads are not acceptable. The camera lens shall be an auto-iris type with remote controlled manual override. The camera unit and tether cable shall be cable of inspecting two complete, consecutive sewer reaches with access approximately one-thousand (1,000) feet apart.
- B. When applicable, CCTV equipment may be used for manhole inspections.
- C. Electronic digital recordings shall be made of the CCTV inspections and copies of both the recordings and inspection reports shall be supplied to the Owner.
- D. Video inspections shall be performed by a certified NASSCO PACP trained operator.
- E. The Contractor's CCTV equipment shall include video cameras, a video monitor cable, power sources, and all equipment necessary to perform a CCTV inspection as outlined in this Technical Specifications.
- F. Color CCTV. All CCTV work shall use color CCTV reproduction.
- G. The cameras shall have pan-and-tilt capabilities and shall have a minimum of 360x270-degree rotation and illumination sensitivity shall be three lux or less and provide a minimum of 460 lines of resolution
- H. During CCTV inspection, lighting intensity shall be adjusted to minimize glare. Lighting and picture quality shall be adjusted to provide a clear, in focus picture of the entire periphery of the pipeline for all conditions encountered.

- I. All camera systems shall be able to navigate around minor objects, roots, and debris. The system used to move the camera through the pipe shall not obstruct the camera's view or interfere with proper documentation of the sewer conditions.
- J. The camera cable shall be retracted to remove slack and to ensure an accurate footage reading.
- K. The distance shall be measured between the exit of the start manhole and the entrance of the finish manhole for a true measurement of the length of the pipe segment, as required by PACP.
- L. Measurements shall be recorded in standard units and the video display readout shall display units to one-tenth (0.1) of a foot.
- M. The cable footage-counter shall be accurate to plus or minus two feet per one thousand linear feet (± 2 feet/1,000 LF).
- N. Video inspection and reporting shall be submitted in a NASSCO compatible format.
- O. The camera lens shall be kept clear of condensation and debris during the CCTV inspection.
- P. The camera, viewing monitor and other components of the inspection system shall be capable of producing picture quality to the satisfaction of OJRSA.

Video Formatting

- A. At the start of each segment, a data generator shall electronically generate and clearly display on the viewing monitor and video recording a record of data in alphanumeric form containing the following minimum information:
 1. Automatic update of the camera's position, in feet and tenths of a foot, in the sewer line from adjusted zero. The distance reading entered on to the data display at the cable calibration point must allow for the distance from the start of the survey to the cable calibration point such that the footage at the start of the survey is zero (0).
 2. Diameter and length of sewer line, type of material sewer line is composed of, linear material type, etc.
 3. Upstream manhole and downstream manholes shall be identified using OJRSA asset identification numbers.
 4. Direction of inspection (upstream or downstream)
 5. Date and starting time of the inspection.
 6. Operator's/Surveyor's name.
- B. Once the survey of the pipeline is under way, specific data should be continuously displayed on the viewing monitor and video recording. The size and position of the data display shall be such as not to interfere with the main subject of the picture yet shall be easily readable when the recording is replayed. At a minimum, the following data should be displayed:
 1. Automatic update of the camera's position, in feet and tenths of a foot, in the sewer line from adjusted zero.
 2. Upstream manhole and downstream manholes shall be identified using OJRSA asset identification numbers.
- C. Each segment length (consecutive manhole to manhole) shall be entered on a separate coding sheet. Thus, where Contractor elects to "pull through" a manhole during a CCTV survey, the Contractor shall start a new coding sheet at the manhole "pulled through" and shall reset the distance to zero (0) on the coding sheet, viewing monitor, and video recording.

Manhole Inspection

Perform a minimum MACP Level 1 inspection for each of the 93 manholes identified in bid. Manhole inspection shall be in accordance with NASSCO MACP certified guidelines.

- A. Identify and document manhole component defects in a Microsoft Excel format to include a severity rating of 0-3 (0 = good, 1 = moderate/fair, 3 = severe, X =Unknown) that shall be assigned to each manhole.
- B. provide appropriate written detail or observation of defects by component.
- C. Provide an Excel summary that include the manholes that have a severe rating and need further investigation. (Further investigation will not be included in this project)
- D. Measure depth of manhole from rim to invert and rim to grade to accuracy of ± 0.1 ft.

- E. Provide surface photographs of the general area including land marks, the frame and cover, camera centered on open manhole looking downward with effluent pipe at 6 o'clock, and significantly deteriorated manhole components, if able. Photo log with photos, manhole ID#, component (if applicable), and clarifying description of photo, as necessary.
- F. **An exhibit with manhole ID#s, approximate interior heights, and approximate rim heights above grade will be provided at the pre-bid conference.**

USB/Hard Drive Device with Data to be Provided

Permanently label each USB/Hard Drive with the following information:

- A. OJRSA Sewer CCTV Inspection
- B. Contractor Name
- C. Date Inspected
- D. Start Manhole Number
- E. Finish Manhole Number

Cleaning Procedures

- A. The normal cleaning operation shall be to propel the jet from the downstream manhole towards the upstream manhole at a low pressure not to exceed one-thousand five hundred pounds per square inch (1,500 psi), and then slowly pull the jetting nozzle back at a higher pressure not to exceed two-thousand five hundred pounds per square inch (2,500 psi) for 8-inch and 10-inch pipe, thereby pulling any debris back to the downstream manhole. Adjust pressure (psi) as needed for 12-inch to 15-inch not to exceed (4,000 psi). The pullback rate on jetting shall not be greater than three feet per second (3 fps). Volume (gallons per minute) used will be solely upon the contractor's discretion as to whatever is necessary to properly complete the job.
- B. During the cleaning, the operator shall watch the flow of debris to the manhole from where the jetting began. If no debris is present, then a single cleaning pass shall be sufficient. If debris is encountered the entire sewer segment shall be cleaned repeatedly until debris is no longer present. If after the second pass of cleaning, there is still a sign of significant dirt and gravel the cleaning operation for that pipe shall cease and the OJRSA designee shall be notified that heavy cleaning of the line is required.
- C. If cleaning of an entire sewer segment cannot be successfully completed from the downstream manhole, the Contractor shall inspect the sewer line using CCTV methods to identify the cause of the problem.
- D. If the Contractor is unable to successfully clean a sewer line, then they shall inform the OJRSA Operations Director or his/her designee on the same day.

Material Removal

All sludge, dirt, sand, rocks, grease, roots, and other materials resulting from sewer cleaning and inspection operations shall be removed at the manhole from which the Contractor is cleaning using the equipment's vacuum system. Those materials which cannot be removed using the vacuum shall be completely removed using alternative methods, such as lifting by bucket to the surface. **Passing material from one (1) sewer line to another shall not be permitted. Material from cleaning operations shall not be stored in manholes.**

Disposal of Wastes

Sewer cleaning and flushing waste shall be collected by Contractor and disposed of at the Coneross Creek Water Recovery Facility located at 623 Return Church Road, Seneca, South Carolina at an area or areas designated by the Operations Director.

Root Removal

- A. If during the cleaning process the operator observes significant quantities of roots being pulled back to the manhole, or the operator performing the inspection encounters any amount of roots more than a "Roots – Fine" classification as defined in the PACP or MACP Reference Manual, the Contractor shall use the appropriate hydraulically driven equipment to remove the roots.
- B. Roots shall be removed where root intrusion has either diminished the design hydraulic capacity or prevented or diminished the quality of the inspection by obscuring any area of the pipeline.
- C. **Only physical removal of the roots from the sewer line will be allowed, no chemical removal methods may be used.** Root removal equipment may include the following: hydraulically driven root cutting blade assemblies and

hydraulic jetting nozzles. Hydraulically propelled chain root cutters are not allowed. Care shall be taken to select equipment that will not damage the host pipe or sewer service connections. All roots shall be removed using the cleaning equipment's vacuum system or other approved means.

- D. If the roots are encountered during the inspection process, then the inspection may be paused, the root cutting may be executed, and then the inspection may be resumed.
- E. Payment for root removal shall be included in the contract unit price per lineal foot for sewer cleaning and manhole inspections.

Notification

The Contractor shall notify the Operations Director or his/her designee, via telephone and follow up with e-mail, seven (7) calendar days prior to the date specified for the beginning of the inspection and cleaning operation.

Hours of Operation

- A. The Contractor shall notify the Operations Director or designee, via telephone and follow up with e-mail, seven (7) calendar days prior to the date specified for the beginning of the inspection and cleaning operation.
- B. All services shall be performed during the hours specified herein as follows:
 - 1. Except as noted as an OJRSA holiday, work hours are to be between 8:00 a.m. and 5:00 p.m. Eastern Time Zone, Monday through Friday. This is based on local time, meaning the work hours are between these times regardless of Eastern Daylight Saving Time or Eastern Standard Time.
 - 2. The Contractor shall suspend operations if weather conditions are such that services cannot be carried out in a safe and effective manner or if they anticipate significant damage to private property within the easement that could lead to a lengthy restoration process of the grounds.
 - 3. The Operations Director, or designee, shall have the discretion to order the suspension of services whenever, in their own judgment, it is in the best interest of OJRSA.
 - 4. When equipment is not operating, nights, rain-days, weekends, they shall be parked away from curves, home frontages and driveways. OJRSA will allow equipment to be stored at the Coneross Creek Water Reclamation Facility, if needed.
 - 5. OJRSA shall not be responsible for theft, vandalism, or other damage to equipment used or staged by the Contractor.

Damage to Roadway, Property, or Easements

- A. The Contractor shall carry on the operations in such a manner so as not to damage the existing ground areas, trees, shrubs, signs, posts, mailboxes, manholes, or other obstacles.
- B. Care shall be taken not to conduct inspections or cleaning during wet conditions where turf damage or ruts would occur. If damage occurs to trees, shrubs, signs, posts, mailboxes, manholes or other obstacles on the right-of-way during and by reason of the inspection or cleaning operations, the Contractor shall replace or repair same at its own cost and expense in like kind and at the direction of the Operations Director at no additional expense to OJRSA. If damaged property resulting from the Contractor's operations has to be repaired or replaced by OJRSA, the cost of such work and repair shall be deducted from the Contractor's payment.
- C. Any damage of property or easement shall be reported to the Operations Director and/or his/her designee immediately.
- D. Any damage of utilities shall be reported to the owner of such utilities immediately.
- E. It is highly recommended the contractor document by means of video or picture prior to performing work to verify that damage was done prior to the inspections or cleaning operation; however, this is not a requirement of this project and shall be performed at the Contractor's own cost. Failure to perform this is at the risk of the Contractor.

Deliverables

- A. The following deliverables shall be in accordance with NASSCO PACP/MACP export standards:
 - 1. PACP/MACP standard database export (.mdb)
 - 2. PACP/MACP standard inspection reports in PDF format
 - 3. PACP/MACP standard inspection video export saved in MPEG format
 - 4. PACP standard inspection photograph export saved in .jpeg format

- B. Summary table of all pipeline segments inspected with the following fields in the order listed:
1. Column 1: Date of Inspection
 2. Column 2: Start Manhole
 3. Column 3: Stop Manhole
 4. Column 4: Total Pipe Length (per as-built plan)
 5. Column 5: Feet TV'd Televised Length
 6. Column 6: Quick Maintenance Rating (per PACP)
 7. Column 7: Quick Structure Rating (per PACP)
 8. Column 8: Section Number
- C. An observation table of all pipeline segments inspected with the following fields in the order listed:
1. Column 1: Section Number
 2. Column 2: Position of Defect
 3. Column 3: Observation Code (per PACP)
 4. Column 4: Observation Description
 5. Column 5: Structural Grade (per PACP)
 6. Column 6: O&M Grade per (PACP)
- D. Summary table of all manholes inspected with the following fields in the order listed:
1. Column 1: Date of Inspection
 2. Column 2: Manhole ID#
 3. Column 3: Rim to Invert (Depth)
 4. Column 4: Rim to Grade (Depth)
 5. Column 5: Cover and Frame Condition
 6. Column 6: Chimney Condition
 7. Column 7: Cone Condition
 8. Column 8: Wall Condition
 9. Column 9: Bench Condition
 10. Column 10: Channel Condition
 11. Column 11: Pipe Connection Condition (one w/ in work condition), if able to be determined from surface.
- E. Photolog of manhole inspections with the following fields in the order listed:
1. Column 1: Photo # or ID
 2. Column 2: Manhole ID #
 3. Column 3: Component
 4. Column 4: Clarifying Description

Safety and Security

- A. **THE SAFETY OF ALL CONTRACTORS FOR THE OJRSA IS OF UTMOST IMPORTANCE!** Contractors shall comply with applicable requirements established by OSHA, SCDOT, and other entities when working along roadways, on private property, etc.
- B. **Identified safety issues, whether found by the Contractor or OJRSA, must be addressed immediately.**
- C. Vehicles used in the operations shall be equipped with normal hazard lights, at a minimum.
- D. Equipment shall be parked as far from the roadway as possible. No equipment shall be parked whereas it may hinder the sight path of any vehicle. No equipment shall be parked on the inside of a curve or outside of a curve.
- E. Signs, lights, safety, and other traffic control items are not a pay item but are considered incidental to safe traffic control.
- F. The Contractor shall be required to provide sufficient road warning signage to ensure the safety of the Contractor and the public. Contractor shall be responsible for ensuring that the signage is adequate and visible. The Contractor shall ensure adequate access for OJRSA vehicles and equipment to respond to an emergency.

Verification of Work

For the purpose of inspection and control, the Operations Director or his/her designee, shall monitor the Contractor's progress throughout the project.

Failure to Complete Work

- E. Contractor agrees to perform all assigned services in accordance with the terms and conditions of this RFB. In performing the services required by this Agreement and any related Task Order, the Contractor shall comply with all local, state and federal laws, rules, and regulations. Contractor shall also obtain and pay for any permits required for the services it performs under this Agreement and any related Task Order, unless indicated in writing by OJRSA. Permit includes at minimum, an Encroachment Permit for work within the public right of way.
- F. If the quality of work is not satisfactory and is deemed by the Operations Director that the Contractor does not have the ability to correct the quality of work, the contractor will be informed in writing of the termination of the contract.
- G. The safety aspects of the CCTV, inspection, and cleaning operations must be followed to ensure the safety of the citizens, Contractor employees, and others. If the Operations Director or his/her designee feel the safety is not adequate, the inspections or cleaning operation will be halted. When it is deemed that the Contractor does not have the ability to operate safely, the contract will be terminated, and the Contractor shall be paid for services completed in linear feet that is deemed acceptable.

Specifications and Qualifications

- A. Contractors submitting bids shall certify in writing that they possess or will possess all necessary paperwork, equipment, and personnel to fulfill the terms of the Contract and be ready to proceed upon receipt of Notice of "Authorization to Proceed."
- B. All operators shall be trained and properly certified to operate CCTV and cleaning equipment. Contractor shall also have appropriate safety training for performing tasks identified in this project, which includes permit-required confined space entry. It shall be the responsibility of the Contractor to supply all necessary training if so asked to do so.
- C. Contractor must submit three (3) references (including company/agency name, current contact name, phone number, and address) for similar work performed for other wastewater conveyance systems. The references should be no older than 2018.
- D. All employees must be legal residents of the United States.

Bid Submission Requirements

Detailed description of bidding Contractor's qualifications, including previous experience related to this type of project should be submitted with the bid. List three (3) recent users of your CCTV, inspection, and/or cleaning services on Attachment A (pages 11 and 12 of this RFB).

Pre-Bid Conference

In order to accommodate the schedules of interested Offerers, there will be two mandatory Pre-Bid Conferences and site visits. **It is only necessary for the Offeror to attend one.** The first will be held on August 8, 2023 at 10:00 am Local Time and the second will be August 11, 2023 at 10:00 am Local Time. Both shall be held at the Oconee Joint Regional Sewer Authority's Coneross Creek Water Reclamation Facility located at 623 Return Church Road, Seneca, South Carolina. Representatives of the Owner will be present to discuss the Project. All interested parties are required to attend the Pre-Bid Conference. **The failure to attend either of the mandatory Pre-Bid Conferences will result in rejection of a submitted bid.**

Deadline for Inquires

Any questions regarding this RFB should be submitted by way of email to Kyle Lindsay at info@ojrsa.org no later than **August 17, 2023 at 4:00 pm Local Time**. Responses will be provided via email to all Offerors. Any representations made over the phone or in verbal conversations are non-binding.

Offerors are expected to examine the RFB thoroughly and should request an explanation of any ambiguities, discrepancies, errors, omissions, or conflicting statements in the Solicitation. Failure to do so will be at the Offeror's risk.

Bid Submittal

- A. The bid must be submitted by completing the cost sheet (Attachment A on pages 11 and 12 of this RFB) with original signature. **Bids that are submitted in other formats will be disqualified from consideration.** All submittals must be complete. It is the Offeror's responsibility to check for calculation errors and completeness prior to submittal.
- B. Offerors shall include all costs (e.g., wages, equipment, water and utilities, taxes, transportation, documentation, etc.) in their price.
- C. **IMPORTANT: Bids using Attachment A with original signature must be received by 2:00 pm Local Time on August 23, 2023. Late submittals will not be accepted. The original certification statement must be submitted in a sealed envelope. Emailed or electronic submittals will not be accepted.**
- D. Proprietary/Confidential Information: The Contractors are asked for any restrictions on the use of data contained in their responses and told that proprietary information will be handled in accordance with applicable law, regulations, and policy of the OJRSA. All proprietary/confidential information must be clearly marked as "Proprietary/Confidential." The OJRSA is a public organization and must comply with the South Carolina Freedom of Information Act. Even if documents are marked "Proprietary/Confidential," then they may still be subject to FOIA laws if required to be provided by the OJRSA's attorney and/or a judge.

Selection Process

The OJRSA shall open all sealed bids no earlier than 2:00 pm Local Time on August 23, 2023. The contract shall be awarded to the lowest total bid submitted by the Offeror that meets the minimum criteria contained within this RFB.

Terms and Award of Contract

OJRSA Administration will present the lowest qualified submittal to the OJRSA Board of Commissioners (or a Committee so approved by the Board) no later than September 11, 2023. If possible, OJRSA Administration will make every attempt to have the bid approved and awarded to the qualified Contractor sooner. If the Board approves the terms and authorizes the Executive Director to enter into the agreement, it shall begin on the day following the Board's approval and will expire at 11:59 pm on March 29, 2024. This allows the Owner flexibility to schedule the project later than the proposed start date as listed below in order to accommodate a Contractor's schedule, forecasted weather, or other obstacles that could hinder the project. Under no circumstances shall the project extend beyond March 29, 2024 without express written consent by OJRSA Executive Director.

Project Start Date

The contract between OJRSA and the Contractor will be executed within two (2) days of award. The awarded contractor will be notified and a tentative start date will be coordinated between the OJRSA and Contractor; however, the start date is dependent on the submittal and approval of all required insurance documentation and other items as stated in Terms and Award of Contract. **The project start date shall be no later than September 20, 2023. The Contractor shall have input into the project start date but the final decision regarding this date belongs to the OJRSA.**

Project Completion Date

Once authorized to begin, the CCTV, cleaning, and inspections (collectively referred to as "field portion of project") portion of the project must be completed within 60 days. After the field portion of the project is completed, the

Contractor shall have 30 days to submit all deliverables to the Owner in the format as stated in this RFB. It will be at the Contractor's discretion if they want to provide deliverables in an alternative format (e.g., at completion of a trunk sewer or sewer basin inspection); however, they cannot exceed the times stated in this section.

No-Fault Delays and Force Majeure

Any unforeseen circumstances such as prolonged weather-related events or substantial equipment failures will require consultation with the Operations Director and OJRSA Executive Director to determine if the schedule will not be met. A request to extend the completion date will be required by written notice or email as soon as the Contractor becomes aware the schedule will not be met due to such circumstances. Written approval from the OJRSA must be issued by the Executive Director.

South Carolina Domicile Requirement

The OJRSA shall not require a domicile obligation for this project.

Background Check

OJRSA reserves the right to conduct a background inquiry of each Contractor, which may include the collection of appropriate criminal history information, contractual business associates and practices, employment histories, and reputation in the business community. By submitting qualifications to the OJRSA, the Contractor consents to such an inquiry and agrees to make available to the OJRSA such books and records as the OJRSA deems necessary to conduct the inquiry. If approved for use by the OJRSA, subcontractors shall be subject to these requirements.

Insurance

Contractor agrees to maintain and keep in force during the life of this project, with a company or companies authorized to do business in South Carolina, General Liability Insurance in the amount of one-million dollars (\$1,000,000). Proof of workers' compensation insurance will be as required by South Carolina state law. Certificates for such policies shall be provided by the firm's insurance agent or broker to OJRSA within ten (10) business days from the date of award. Contractor will provide OJRSA a minimum of thirty (30) calendar days advance notice in the event of the insurance policies or insurance policy is canceled. Subcontractors approved by OJRSA to perform work on this project are subject to the all the requirements as stated in this RFB.

Determination of Responsibility

The OJRSA may make such investigation as it deems necessary to determine the ability of a Contractor to provide full performance as outlined in the RFB. The Contractor will furnish to the OJRSA all such information and data for this purpose upon request. The OJRSA reserves the right to reject any Contractor if the evidence submitted by or investigation of such Applicant fails to satisfy the OJRSA that such Applicant is properly qualified to carry out the obligations as stated herein.

Rights Reserved by OJRSA

The OJRSA reserves the right to:

- A. **Reject any and all bids for any reason; to waive any informality or irregularity not affected by law; and to evaluate, in its absolute discretion, the information within.**
- B. **Reduce the project in scale or scope in order to meet budget requirements.**

Termination

Either party may terminate this Agreement by providing written notice of the intent to terminate the Agreement thirty (30) days in advance of the expiration date of the current term of the Agreement.

Payment for Services

Payment for this work, complete and accepted will be made at the Contract Unit Price Per Linear Foot and Manholes Inspected for which payment shall be full compensation for furnishing all materials, all labor, tools, equipment, traffic control, and incidentals necessary to satisfactorily complete the contract. Invoices may be submitted to the OJRSA for work performed on a bi-weekly basis or monthly basis.

Invoices all invoices must be submitted no later than April 5, 2024.

Submittal Requirements

Responders must submit the following in a sealed envelope or package no later than 2:00 pm Local Time on August 23, 2023:

- Attachment A – CCTV/Inspection/Cleaning Unit Cost Sheet

It is the Offeror's responsibility to verify the receipt of the submittal by the OJRSA. **Late submittals will not be accepted.**

Questions shall be addressed to info@ojrsa.org. Emailed quotes shall not be accepted.

The bid shall be submitted to:

Oconee Joint Regional Sewer Authority
ATTN: Project 2024-04 RFB
623 Return Church Road
Seneca, South Carolina 29631

Attachment A – CCTV/Inspection/Cleaning Unit Cost Sheet

Services to provide per the project:

CCTV Status	Number of Manholes	Linear Foot per Pipe Diameter						Total
		8"	10"	12"	14-16"	30"	36"	
Highlighted Area 1								
Already Completed	-	0	0	0	912	0	0	912
Needed	-	4,476	1,691	240	6,046	0	0	12,453
Area 1 Total	121	4,476	1,691	240	6,046	0	0	12,453
Highlighted Area 2								
Already Completed	-	0	0	0	0	644	0	644
Needed	-	0	0	0	0	98	2,917	3,015
Area 2 Total	31	0	0	0	0	742	2,917	3,659
Total	152	4,476	1,691	240	6,046	742	2,917	16,112

Description and Bid Unit Price	Quantity	Cost/Unit (\$)	Unit Subtotal (\$)
Highlighted Area 1			
8-inch sewer cleaning and TV inspection	4,476± Linear Feet	\$ /ft	
10-inch sewer cleaning and TV inspection	1,691± Linear Feet	\$ /ft	
12-inch sewer cleaning and TV inspection	240± Linear Feet	\$ /ft	
15-inch sewer cleaning and TV inspection	6,046± Linear Feet	\$ /ft	
Level 1 manhole inspections	121 Manholes	/manhole	
Highlighted Area 2			
30-inch sewer cleaning and TV inspection	742± Linear Feet	\$ /ft	
36-inch sewer cleaning and TV inspection	2,917± Linear Feet	\$ /ft	
Level 1 manhole inspections	31 Manholes	/manhole	

TOTAL BID PRICE (\$) _____

PACP/MACP Software utilized by the Contractor: _____

Company has the following equipment that is available to perform work described within RFB:

Reference #1 (Mandatory – Must Be Applicable Experience to this RFB) (No Duplicate References)

Company Name: _____ Calendar Year(s) Work Performed: _____

Contact Name: _____ Phone: _____ Email: _____

Reference #2 (Mandatory – Must Be Applicable Experience to this RFB) (No Duplicate References)

Company Name: _____ Calendar Year(s) Work Performed: _____

Contact Name: _____ Phone: _____ Email: _____

Reference #3 (Mandatory – Must Be Applicable Experience to this RFB) (No Duplicate References)

Company Name: _____ Calendar Year(s) Work Performed: _____

Contact Name: _____ Phone: _____ Email: _____

By my signature below, I confirm that I have read and understand all information contained in the OJRSA Project #2024-04 CCTV Inspection and Cleaning of Gravity Sanitary Sewer Pipeline and Manholes RFB. I also confirm this bid represents the submittal on behalf of my employer/company.

Company Name: _____

Address: _____ Phone: _____

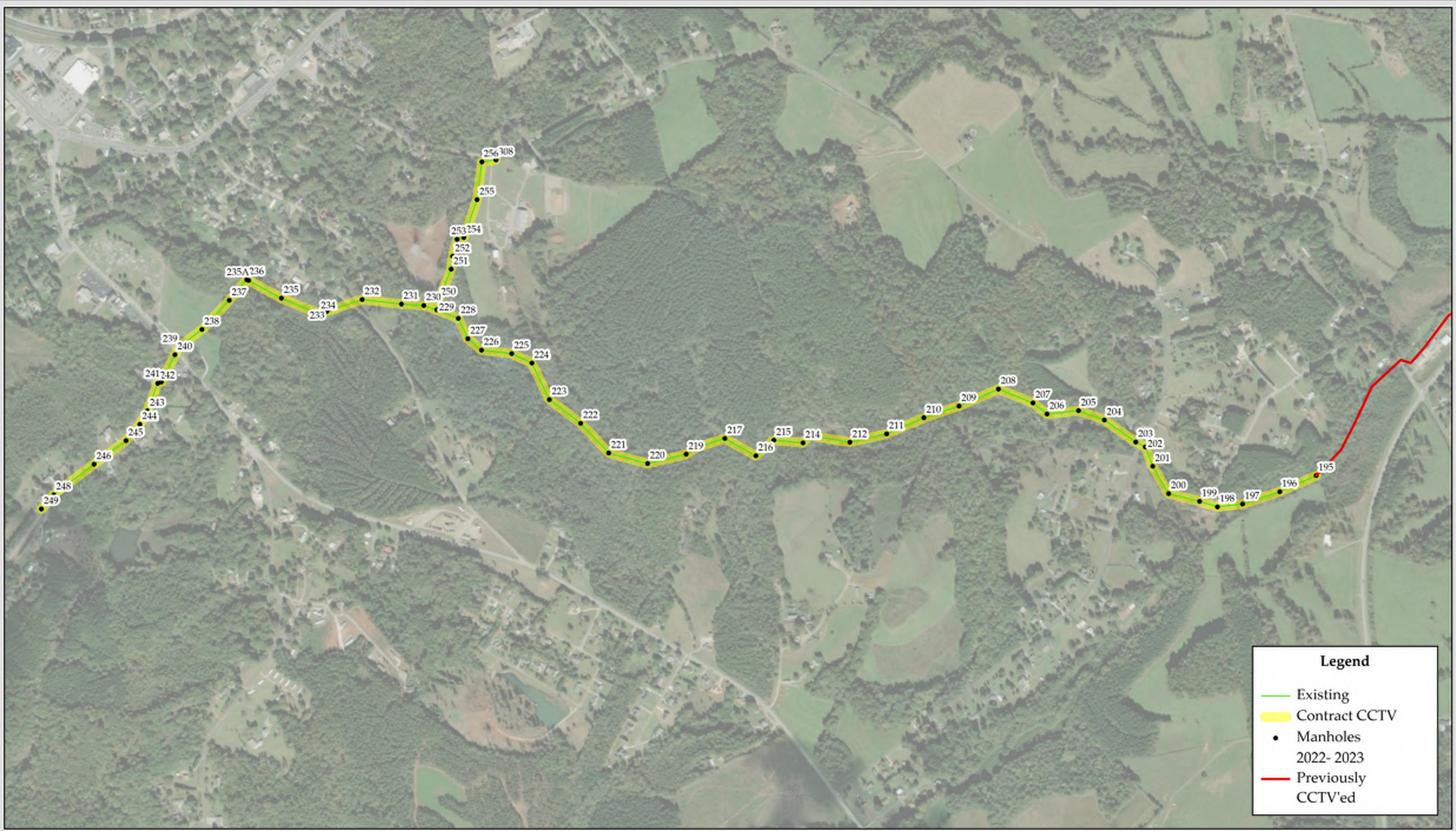
Signature: _____ Date: _____

Name (Print): _____ Email: _____

Title: _____

Exhibit A

See following three pages for maps of the area to be assessed



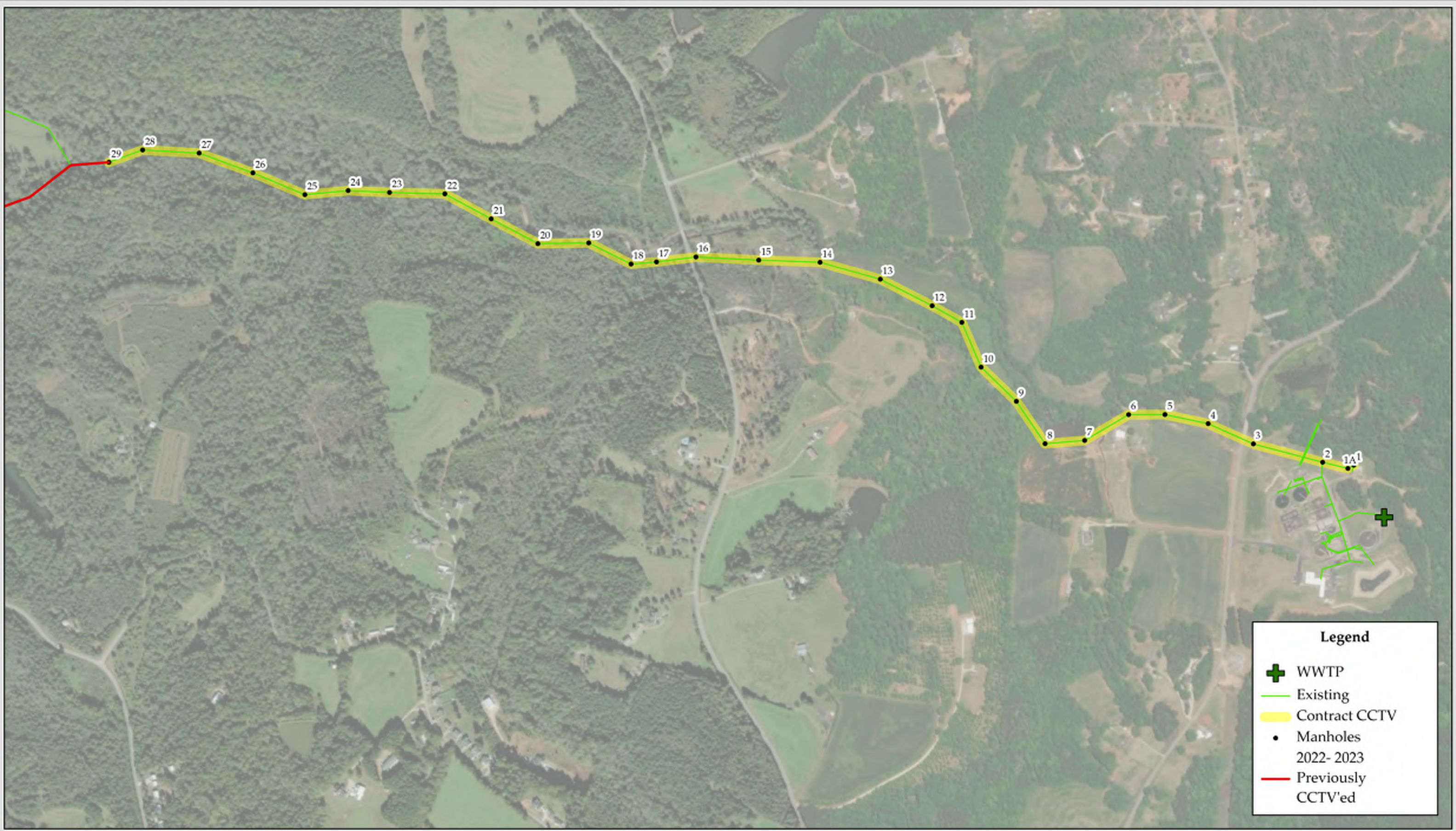
Legend

- Existing
- Contract CCTV
- Manholes
2022-2023
- Previously
CCTV'ed



Legend

- Existing
- Contract CCTV
- Manholes
2022- 2023
- Previously
CCTV'ed



Legend

- + WWTP
- Existing
- Contract CCTV
- Manholes
2022- 2023
- Previously
CCTV'ed